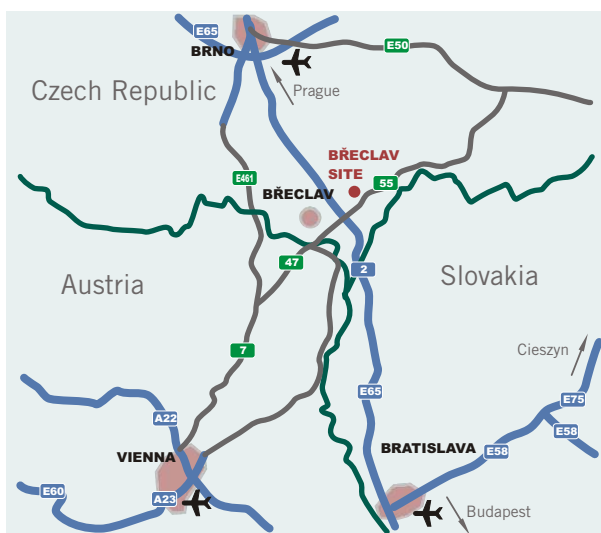
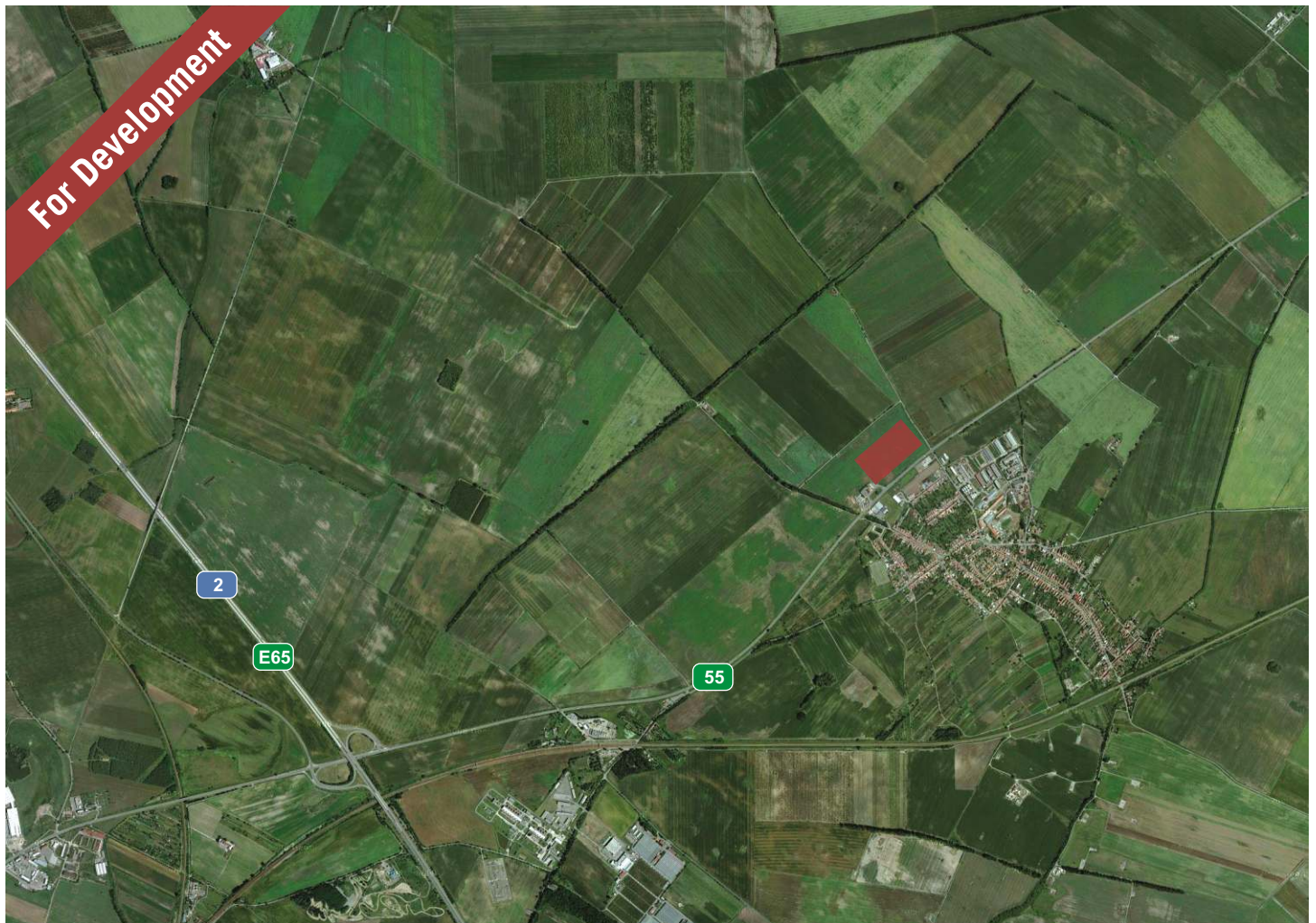


PROLOGIS PARK BŘECLAV

Industrially Zoned Site | Potential Buildout of 63,500 Square Meters | Breclav, Czech Republic



Location

- Direct access to E-65 European route (Prague-Bratislava) via road no 55
- 8.5 kilometers north-east of Breclav
- 80 kilometers north-east of Vienna
- 80 kilometers north of Bratislava
- 60 kilometers south of Brno
- 17.3 hectares

Site Description

- Approximately 1 kilometer to motorway connection
- Nearby ports: Bratislava and Vienna
- Nearby container terminals: Bratislava and Vienna
- Closest international airports: Bratislava and Vienna
- Excellent infrastructure
- Advantageous labour cost & availability
- Located close to a region with high consumption (Brno, Bratislava, Vienna)

PROLOGIS PARK BŘECLAV

Industrially Zoned Site | **Potential Buildout of 63,500 Square Meters** | Breclav, Czech Republic



example building layout

Potential Building SM:

- Building 1 - 35,252
- Building 2 - 28,194

Site Utilisation:

- Site used for warehousing and light manufacturing
- Distribution centre for Czech Republic and Slovakia
- Regional distribution centre for CEE cluster countries
- Light manufacturing site (assembly lines, co-packing, other light production)

Contact

Mario Sander
Senior Vice President / Market Officer
+420 739 343 091 • msander@prologis.com

Martin Polak
Leasing Manager Slovakia & Czech Republic
+421 904 661 044 • mpolak@prologis.com

ProLogis
Gemini Building
Pankraci 1683/127
140 00 Prague
+420 225 340 000 Phone
+420 225 340 001 Fax
www.prologis.com

